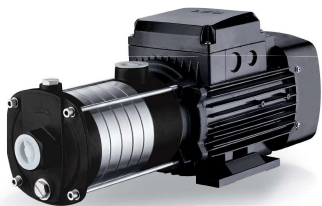


ECH

Stainless Steel Horizontal Multistage Pump



Application

- It is applicable to household water supply, equipment support, pipeline pressurization, garden watering, vegetable greenhouse watering, fish farming and poultry raising, industrial and mining, water supply and drainage of enterprises and high-rise buildings, central air conditioner and centralized heating circulation system, etc.

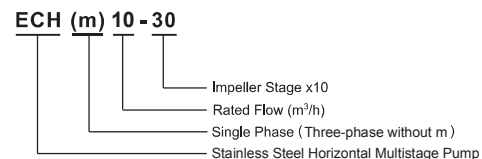
Pump

- AISI 304 shaft
- Max. liquid temperature: +85°C
- Altitude: up to 1000 m
- Max. suction: 8 m
- Max. inlet pressure: limited by max. operating pressure
- Max. operation pressure: 10 bar
- Liquid PH valve: 4 - 10

Motor

- Motor with copper winding
- Built-in thermal protector for single phase motor
- Insulation class: F
- Protection class: IP55
- Max. ambient temperature: +40°C

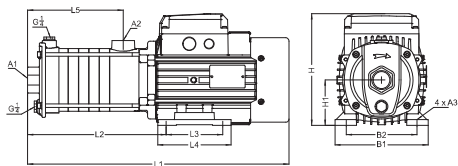
Identification Codes



Technical Data

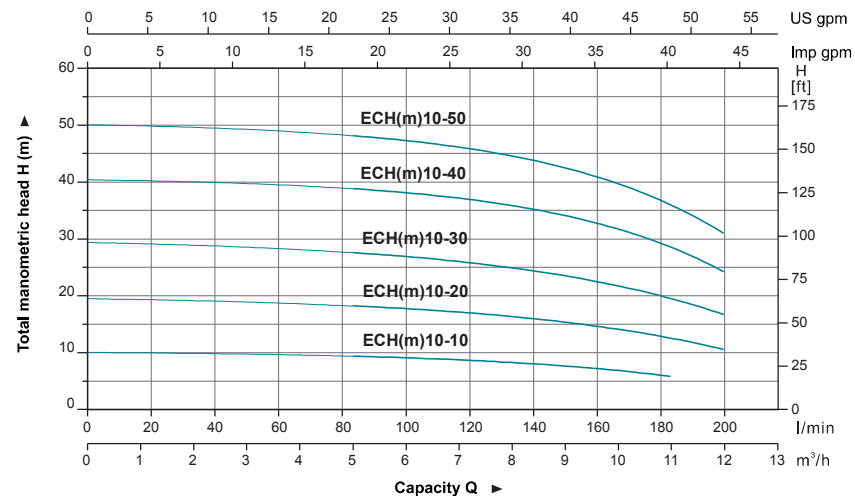
Model	Power		Q (m³/h) Q (l/min)	6	7	8	9	10	11	12
	kW	HP		100	117	133	150	167	183	200
ECH(m)10-10	0.75	1.0	H (m)	9.1	8.7	8.2	7.7	6.8	5.8	—
ECH(m)10-20				17.9	17.1	16.3	15.3	14.0	12.5	10.6
ECH(m)10-30	1.1	1.5		27.1	26.3	24.9	23.4	21.4	19.3	16.9
ECH(m)10-40	1.5	2.0		38.6	37.6	35.9	33.9	31.2	28.2	24.6
ECH(m)10-50	2.2	3.0		47.8	46.4	44.4	42.2	39.5	35.9	31.1

Dimension



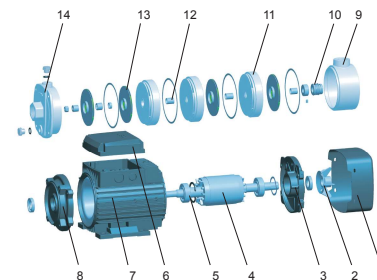
Model	L1	L2	L3	L4	L5	B1	B2	H	H1	A1	A2	A3
ECH(m)10-10	430	212	100	130	121	165	125	204.5	80	G1 $\frac{1}{2}$	G1 $\frac{1}{4}$	Φ10
ECH(m)10-20	430	212	100	130	121	165	125	204.5	80	G1 $\frac{1}{2}$	G1 $\frac{1}{4}$	Φ10
ECH(m)10-30	460.5	242.5	100	130	151.5	165	125	504.5	80	G1 $\frac{1}{2}$	G1 $\frac{1}{4}$	Φ10
ECH(m)10-40	549.5	261.5	125	150	182	180	140	217.5	90	G1 $\frac{1}{2}$	G1 $\frac{1}{4}$	Φ10
ECH(m)10-50	579.5	291.5	125	150	212	180	140	217.5	90	G1 $\frac{1}{2}$	G1 $\frac{1}{4}$	Φ10

Hydraulic Performance Curves



Materials Table

No.	Part	Material
1	Fan cover	08F
2	Fan	PP
3	Rear cover	ZL 102
4	Rotor	
5	Bearing	
6	Terminal box	ZL 102
7	Stator	
8	Front cover	Cast iron
9	Outlet body	Cast iron
10	Mechanical seal	Carbon/Ceramic
11	Diffuser	AISI 304
12	Sleeve	AISI 304
13	Impeller	AISI 304
14	Pump body	Cast iron



Package Information

Model	GW (Kgs)	L (mm)	W (mm)	H (mm)	Quantity (PCS/20 TEU)
ECH(m)10-10	20.7	503	235	268	856
ECH(m)10-20	20.8	503	235	268	856
ECH(m)10-30	21.9	503	235	268	856
ECH(m)10-40	28.2	618	245	283	653
ECH(m)10-50	30.6	618	245	283	653

