

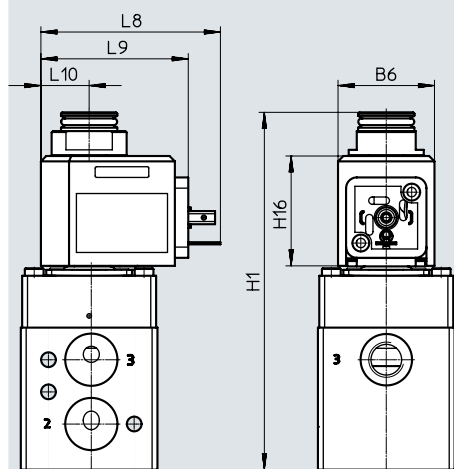
Data sheet – Modular system, poppet valves

Dimensions

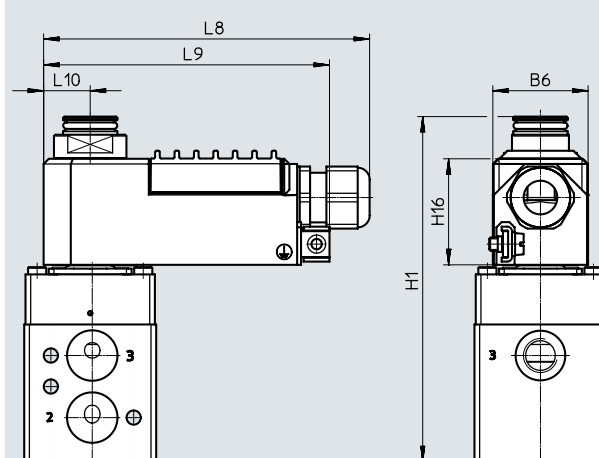
Download CAD data → www.festo.com

Valves with solenoid coil, pneumatic connection, size 1/4"

VOFC-LT-...-18-A1-...



VOFC-LT-...-18-K4-...-EX4ME

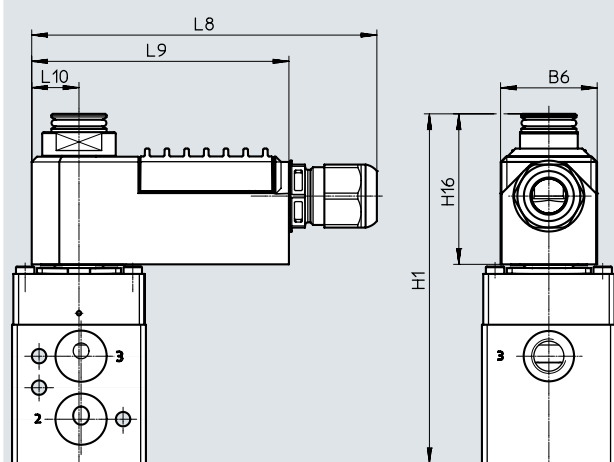


Dimensions

Download CAD data → www.festo.com

Valves with solenoid coil, pneumatic connection, size 1/4"

VOFC-LT-...-11-K4-1-EX4A



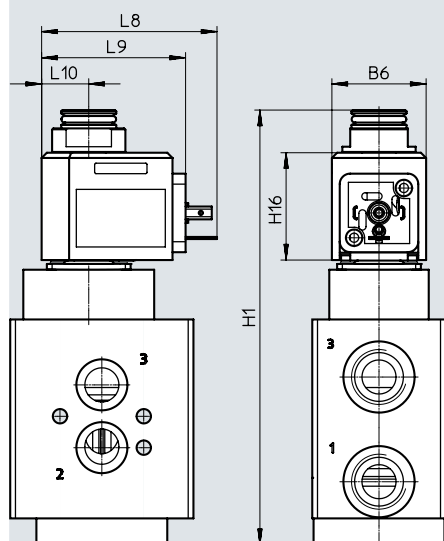
Type	B6	H1	H16	L8	L9	L10
VOFC-LT-...-18-A1-...	36	133	41	67	55	18
VOFC-LT-...-18-K4-...-EX4ME	37	133	41	125	111	18
VOFC-LT-...-11-K4-1-EX4A	37	133	41	125	98	18

Data sheet – Modular system, poppet valves

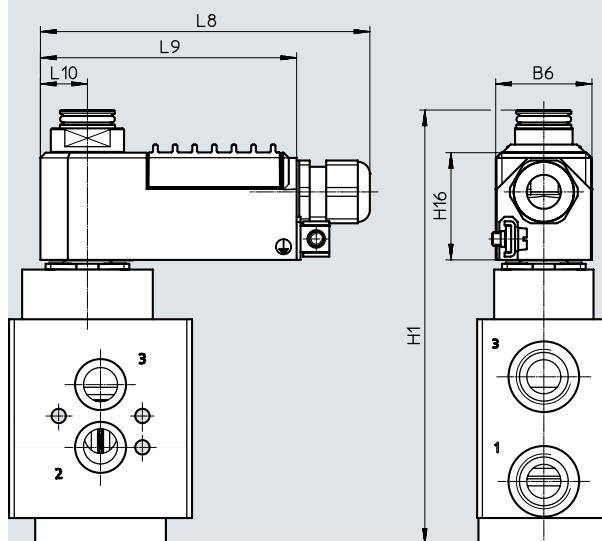
DimensionsDownload CAD data → www.festo.com

Valves with solenoid coil, pneumatic connection, size 1/2"

VOFC-LT-...-18-A1-...

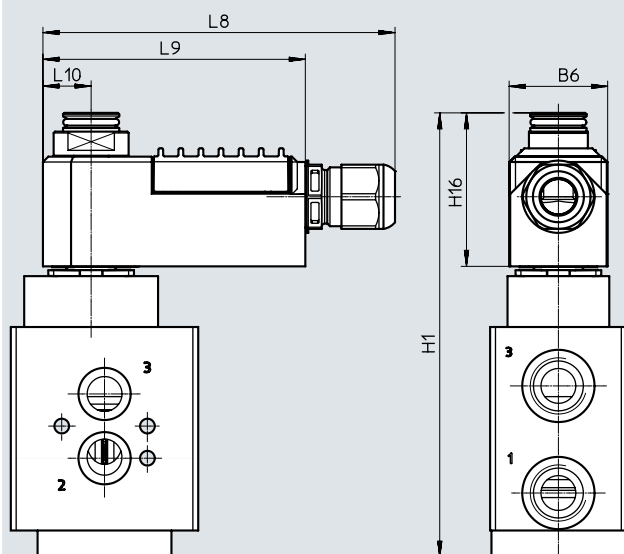


VOFC-LT-...-18-K4-...-EX4ME

**Dimensions**Download CAD data → www.festo.com

Valves with solenoid coil, pneumatic connection, size 1/2"

VOFC-LT-...-11-K4-1-EX4A



Type	B6	H1	H16	L8	L9	L10
VOFC-LT-...-18-A1-...	36	166	41	67	55	18
VOFC-LT-...-18-K4-...-EX4ME	37	166	41	125	111	18
VOFC-LT-...-11-K4-1-EX4A	37	166	41	125	98	18

Data sheet – Modular system, poppet valves

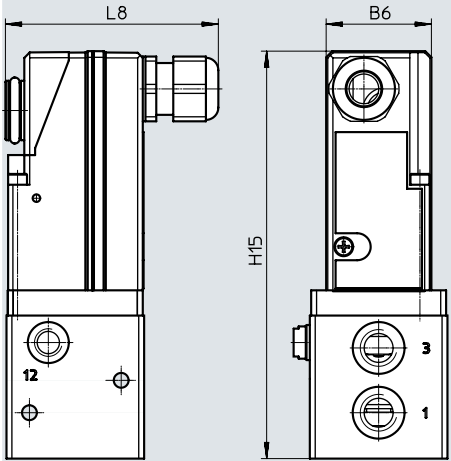
Solenoid valve, nozzle/baffle plate
(VOFC-...-P3-...)

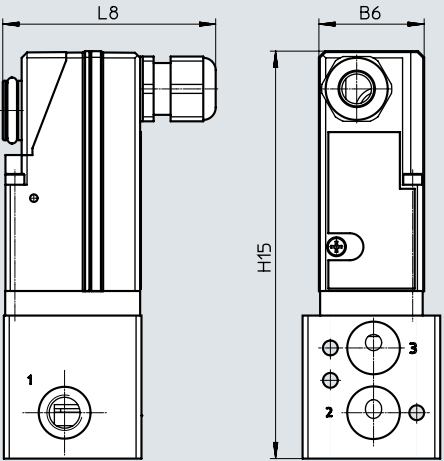


Technical data, solenoid valve, nozzle/baffle plate		
Type	VOFC-...-P3-...-0.09-...-EX4A	VOFC-...-P3-...-0.4-...-EX4A
With pilot control unit	VACC-P3-0.09-K4-1-EX4A	VACC-P3-0.4-K4-1-EX4A
Design	Nozzle/baffle plate pilot control	
Operating voltage range [V DC]	6.4 ... 40	16 ... 40
Degree of protection	IP50	
Reverse polarity protection	Bipolar	
Duty cycle [%]	100	
Max. input power P_i [mW]	650	
Max. input voltage U_i [V]	40	
Max. input current I_i [mA]	200	
Effective internal capacitance C_i	Negligibly low	
Effective internal inductance L_i	Negligibly low	
ATEX category for gas	II 2G	
Type of ignition protection for gas	Ex ia IIC T6, T5 Gb	
ATEX category for dust	II 2D	
Type of ignition protection for dust	Ex ia IIIC T85°C, T125°C Db	
Explosion-proof ambient temperature [°C]	T5, T125: -40 ≤ Ta ≤ +70 T6, T85: -40 ≤ Ta ≤ +30	
Certificate issuing authority	BVS14ATEXE098X IECEX BVS14.0063X KGS15-GA4BO-0565X	
Notified body for quality testing	0344	
Explosion protection certification outside the EU	EPL Gb (IECEX) EPL Db (IECEX) EPL Gb (KR) EPL Db (KR)	
CE marking (see declaration of conformity)	To EU Explosion Protection Directive (ATEX)	
Insulation class	H	
Electrical connection	Terminal box, cable entry, thread M20x1.5, conductor cross-section max. 1.5 mm², cable diameter 5-9 mm	
Information on materials for solenoid coil	PBT reinforced, UP	

Data sheet – Modular system, poppet valves

Dimensions
Solenoid valve with pilot nozzle/baffle plate, pneumatic connection, size 1/4"
Connection -G14/-N14

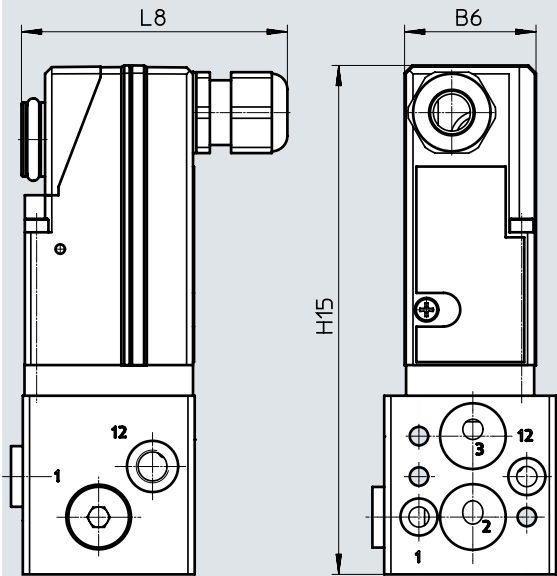




[Download CAD data → www.festo.com](#)

Type	B6	H15	L8
VOFC-LT-M32C-MC-G14-P3-0.4-1-K4-EX4A	39	151	77
VOFC-LT-M32C-MC-N14-P3-0.4-1-K4-EX4A			
VOFC-LT-M32C-MC-G14-P3-0.09-1-K4-EX4A			
VOFC-LT-M32C-MC-N14-P3-0.09-1-K4-EX4A			
VOFC-LT-M32C-M-FG14-P3-0.4-1-K4-EX4A			
VOFC-LT-M32C-M-FG14-P3-0.09-1-K4-EX4A			

Dimensions
Solenoid valve with pilot nozzle/baffle plate, pneumatic connection, size 1/4"
Connection -FGP14



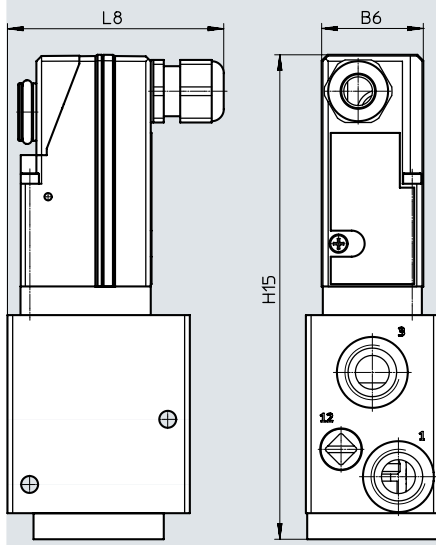
[Download CAD data → www.festo.com](#)

Type	B6	H15	L8
VOFC-LT-M32C-M-FGP14-P3-0.4-1-K4-EX4A	39	151	77
VOFC-LT-M32C-M-FGP14-P3-0.09-1-K4-EX4A			

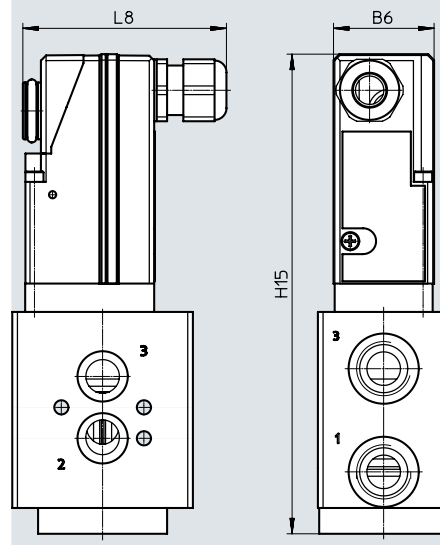
Data sheet – Modular system, poppet valves

DimensionsDownload CAD data → www.festo.com

Solenoid valve with pilot nozzle/baffle plate, pneumatic connection, size 1/2"
 Connection -G12/-N12



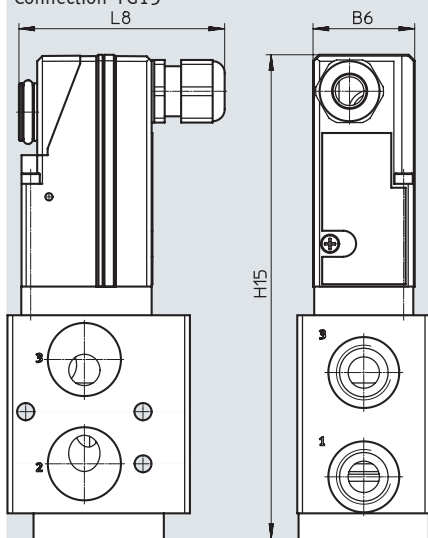
Connection -FG12



Type	B6	H15	L8
VOFC-LT-M32C-MC-G12-P3-0.4-1-K4-EX4A	39	185.9	79.9
VOFC-LT-M32C-MC-N12-P3-0.4-1-K4-EX4A			
VOFC-LT-M32C-MC-G12-P3-0.09-1-K4-EX4A			
VOFC-LT-M32C-MC-N12-P3-0.09-1-K4-EX4A			
VOFC-LT-M32C-M-FG12-P3-0.4-1-K4-EX4A			
VOFC-LT-M32C-M-FG12-P3-0.09-1-K4-EX4A			

DimensionsDownload CAD data → www.festo.com

Solenoid valve with pilot nozzle/baffle plate, pneumatic connection, size 1/2"
 Connection -FG13

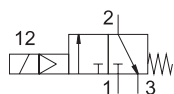


Type	B6	H15	L8
VOFC-LT-M32C-M-FG13-P3-0.4-1-K4-EX4A	39	185.9	79.9
VOFC-LT-M32C-M-FG13-P3-0.09-1-K4-EX4A			


Data sheet – 3/2-way valves, poppet valve, single solenoid, G1/4 NAMUR

Function

3/2-way valve



-  - Temperature range
-25 ... 60°C

-  - Flow rate
766 l/min



General technical data

General technical data		G1/4 basic valve, NAMUR	G1/4 basic valve, NAMUR, intrinsically safe	G1/4 basic valve, NAMUR, P connection	G1/4 basic valve, NAMUR, P connection, intrinsically safe
Valve function		3/2-way closed, single solenoid			
Pneumatic connection	1	G1/4		M5 and connection pattern to NAMUR	
	2	Flange 1/4 and connection pattern to NAMUR			
	3	G1/4			
Design		Piloted poppet valve			
Width	[mm]	51			
Mounting position		Any			
Sealing principle		Hard			
Manual override		None			
Reset method		Mechanical spring			
Actuation type		Electric			
Type of control		Piloted			
Pilot air supply		Internal		Internal, external	
Flow rate Kv for pressurisation	[m³/h]	0.5		0.5	
Flow rate Kv for exhausting	[m³/h]	0.8		0.65	
Flow direction		Non-reversible			
Product weight	[g]	600			
Switching time off	[ms]	18			
Switching time on	[ms]	24			
Nominal width	[mm]	6			
Standard nominal flow rate 1→ 2	[l/min]	766			
Standard nominal flow rate 2→ 3	[l/min]	1467			

Operating and environmental conditions

Operating and environmental conditions		G1/4 basic valve, NAMUR	G1/4 basic valve, NAMUR, intrinsically safe	G1/4 basic valve, NAMUR, P connection	G1/4 basic valve, NAMUR, P connection, intrinsically safe
Operating medium		Compressed air to ISO 8573-1:2010 [7:-:-]			
Degree of protection		IP65			
Operating pressure range	[bar]	1 ... 8			
Operating pressure range in case of external pilot air	[bar]	–		0 ... 8	
Temperature of medium	[°C]	–25 ... 60			
Ambient temperature	[°C]	–25 ... 60			
Safety integrity level	[SIL]	Up to SIL3 low demand mode			
		Up to SIL3 high demand mode			
Corrosion resistance class CRC ¹⁾		4			

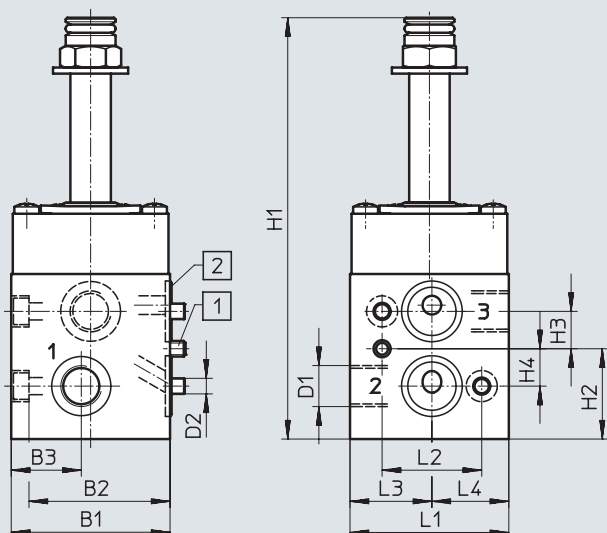
1) Corrosion resistance class CRC 4 to Festo standard FN 940070

Particularly high corrosion stress. Outdoor exposure under extreme corrosive conditions. Parts exposed to aggressive media, e.g. in the chemical or food industries. Such applications may need to be safeguarded by special tests (→ also FN 940082), using appropriate media.

Data sheet – 3/2-way valves, poppet valve, single solenoid, G1/4 NAMUR

Materials	
Housing	Ematal-coated aluminium
Seals	NBR
Note on materials	Contains paint-wetting impairment substances, RoHS-compliant

Dimensions

Download CAD data → www.festo.com

[1] Coding pin M5x10

[2] O-ring 16x2

Type	B1	B2	B3	D1	D2	H1	H2	H3	H4	L1	L2	L3	L4
VOFC-LT-M32C-M-FG14-F19	51	45.3	22.5	G1/4	5.5	135.3	29	12	12	51	32	26.3	24.7
VOFC-LT-M32C-M-FG14-F19A													

Data sheet – 3/2-way valves, poppet valve, single solenoid, G1/4 NAMUR

Dimensions

Download CAD data → www.festo.com

[1] Coding pin M5x10
[2] O-ring 16x2

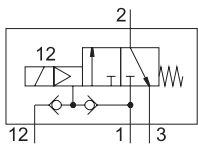
Type	B1	B2	B3	B4	D1	D2	H1	H2	H3	H4	L1	L2	L3	L4
VOFC-LT-M32C-MC-FGP14-F19	51	45.3	22.5	4.7	NAMUR G1/4	M5	133.4	29	12	12	51	32	26.3	24.7
VOFC-LT-M32C-MC-FGP14-F19A														

Ordering data					
Circuit symbol	Function	Pneumatic connection	Type of ignition protection	Part no.	Type
In-line valve					
	3/2-way closed, single solenoid	G1/4 and NAMUR	Without	4514738	VOFC-LT-M32C-M-FG14-F19
			Intrinsically safe	4514739	VOFC-LT-M32C-M-FG14-F19A
	3/2-way closed, single solenoid	G1/4 and NAMUR, P connection	Without	4514744	VOFC-LT-M32C-MC-FGP14-F19
			Intrinsically safe	4514745	VOFC-LT-M32C-MC-FGP14-F19A


Data sheet – 3/2-way valves, poppet valve, single solenoid, G1/4 in-line

Function

3/2-way valve



–  – Temperature range
–25 ... 60°C

–  – Flow rate
766 l/min



General technical data

		G1/4 basic valve	G1/4 basic valve, intrinsically safe	NPT basic valve	NPT basic valve, intrinsically safe
Valve function		3/2-way closed, single solenoid			
Pneumatic connection	1	G1/4	G1/4	1/4 NPT	1/4 NPT
	2	G1/4	G1/4	1/4 NPT	1/4 NPT
	3	G1/4	G1/4	1/4 NPT	1/4 NPT
Design		Piloted poppet valve			
Width	[mm]	51			
Mounting position		Any			
Sealing principle		Hard			
Manual override		None			
Reset method		Mechanical spring			
Actuation type		Electric			
Type of control		Piloted			
Pilot air supply		Internal, external			
Flow rate Kv for pressurisation	[m³/h]	0.72			
Flow rate Kv for exhausting	[m³/h]	1.4			
Flow direction		Non-reversible			
Product weight	[g]	550			
Switching time off	[ms]	18			
Switching time on	[ms]	24			
Nominal width	[mm]	6			
Standard nominal flow rate 1→2	[l/min]	766			
Standard nominal flow rate 2→3	[l/min]	1467			

Operating and environmental conditions

Operating medium			Compressed air to ISO 8573-1:2010 [7:-:-]
Degree of protection			IP65
Operating pressure range	[bar]	1 ... 8	
Operating pressure range in case of external pilot air	[bar]	0 ... 8	
Temperature of medium	[°C]	-25 ... 60	
Ambient temperature	[°C]	-25 ... 60	
Safety integrity level	[SIL]	Up to SIL3 low demand mode	
		Up to SIL3 high demand mode	
Corrosion resistance class CRC ¹⁾			4

1) Corrosion resistance class CRC 4 to Festo standard FN 940070

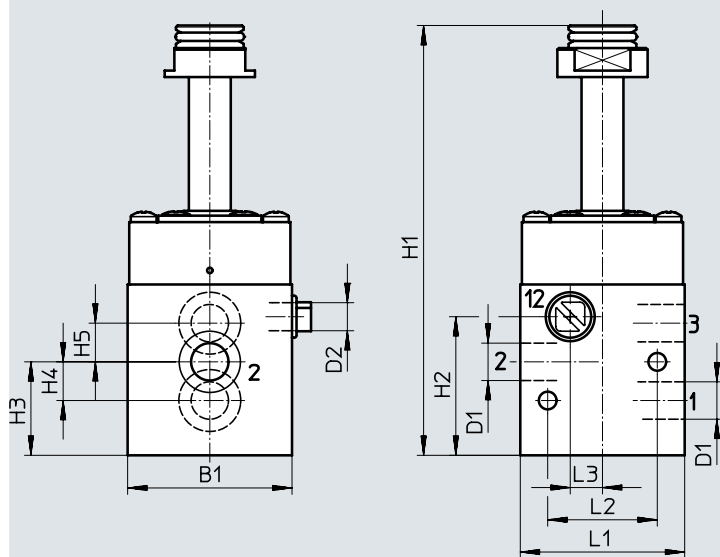
Particularly high corrosion stress. Outdoor exposure under extreme corrosive conditions. Parts exposed to aggressive media, e.g. in the chemical or food industries. Such applications may need to be safeguarded by special tests (→ also FN 940082), using appropriate media.

Materials

Housing	Ematal-coated aluminium
Seals	NBR
Note on materials	Contains paint-wetting impairment substances, RoHS-compliant

Data sheet – 3/2-way valves, poppet valve, single solenoid, G1/4 in-line

Dimensions

Download CAD data → www.festo.com

Type	B1	D1	D2	H1	H2	H3	H4	H5	L1	L2	L3
VOFC-LT-M32C-MC-G14-F19	51	G1/4	G1/8	133	43	29	12	12	51	34	10
VOFC-LT-M32C-MC-G14-F19A											
VOFC-LT-M32C-MC-N14-F19		1/4NPT	1/8NPT								
VOFC-LT-M32C-MC-N14-F19A											

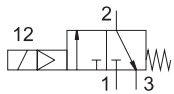
Ordering data

Circuit symbol	Function	Pneumatic connection	Type of ignition protection	Part no.	Type
In-line valve					
	3/2-way closed, single solenoid	G1/4	Without	4514740	VOFC-LT-M32C-MC-G14-F19
			Intrinsically safe	4514741	VOFC-LT-M32C-MC-G14-F19A
		1/4 NPT	Without	4514742	VOFC-LT-M32C-MC-N14-F19
			Intrinsically safe	4514743	VOFC-LT-M32C-MC-N14-F19A


Data sheet – 3/2-way valve, poppet valve, single solenoid, G1/2 NAMUR

Function

3/2-way valve



–  – Temperature range
–25 ... 60°C

–  – Flow rate
2868 l/min



General technical data

		VOFC-...-FG12-F19 VOFC-...-FG12-F19A	VOFC-...-FG13-F19 VOFC-...-FG13-F19A
Valve function		3/2-way closed, single solenoid	
Pneumatic connection	1	G1/2	
	2	Flange 1/4 and connection pattern to NAMUR	Flange 1/2 and connection pattern to NAMUR
	3	G1/2	
Design		Piloted poppet valve	
Width	[mm]	51	
Mounting position		Any	
Sealing principle		Hard	
Manual override		None	
Reset method		Mechanical spring	
Actuation type		Electric	
Type of control		Piloted	
Pilot air supply		Internal	Internal, external
Flow rate Kv for pressurisation	[m³/h]	2.4	
Flow rate Kv for exhausting	[m³/h]	3.3	
Flow direction		Non-reversible	
Product weight	[g]	880	900
Switching time off	[ms]	14	
Switching time on	[ms]	25	
Nominal width	[mm]	12	
Standard nominal flow rate 1 → 2	[l/min]	2686	
Standard nominal flow rate 2 → 3	[l/min]	3462	

Operating and environmental conditions

		VOFC-...-FG12-F19 VOFC-...-FG12-F19A	VOFC-...-FG13-F19 VOFC-...-FG13-F19A
Operating medium		Compressed air to ISO 8573-1:2010 [7:-:-]	
Degree of protection		IP65	
Operating pressure range	[bar]	2 ... 8	
Operating pressure range in case of external pilot air	[bar]	–	0 ... 8
Temperature of medium	[°C]	–25 ... 60	
Ambient temperature	[°C]	–25 ... 60	
Safety integrity level	[SIL]	Up to SIL3 low demand mode	
		Up to SIL3 high demand mode	
Corrosion resistance class CRC ¹⁾		4	

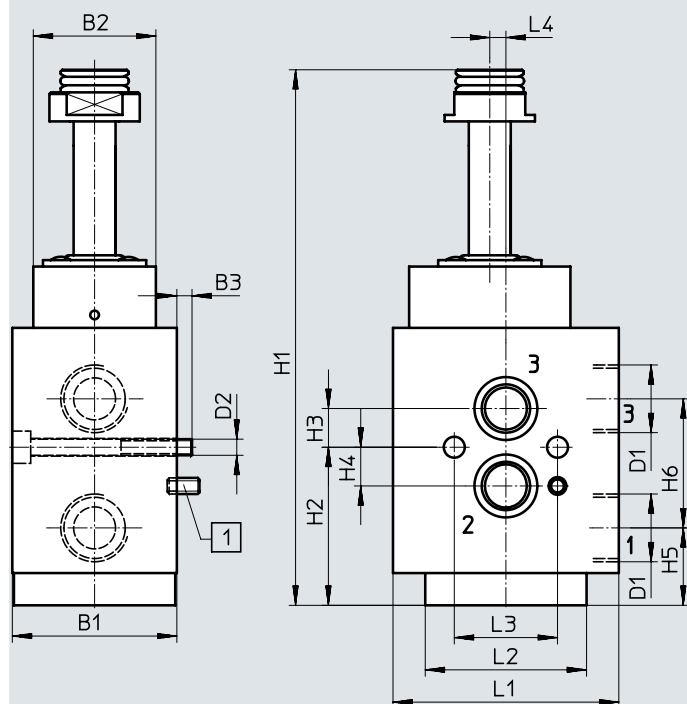
1) Corrosion resistance class CRC 4 to Festo standard FN 940070

Particularly high corrosion stress. Outdoor exposure under extreme corrosive conditions. Parts exposed to aggressive media, e.g. in the chemical or food industries. Such applications may need to be safeguarded by special tests (→ also FN 940082), using appropriate media.

Data sheet – 3/2-way valve, poppet valve, single solenoid, G1/2 NAMUR

Materials	
Housing	Ematal-coated aluminium
Seals	NBR
Note on materials	Contains paint-wetting impairment substances, RoHS-compliant

Dimensions

Download CAD data → www.festo.com

[1] Coding pin M5x10

Type	B1	B2	B3	D1	D2	H1	H2	H3	H4	H5	H6	L1	L2	L3	L4
VOFC-LT-M32C-M-FG12-F19	51	38	4.7	G1/2	M5	166	49	12	12	24	40	70	50	32	5
VOFC-LT-M32C-M-FG12-F19A															
VOFC-LT-M32C-MC-FG13-F19															
VOFC-LT-M32C-MC-FG13-F19A															

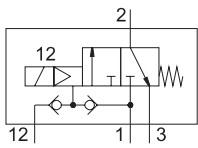
Ordering data

Circuit symbol	Function	Pneumatic connection	Type of ignition protection	Part no.	Type
In-line valve					
	3/2-way closed, single solenoid	G1/2 and NAMUR	Without	4514746	VOFC-LT-M32C-M-FG12-F19
			Intrinsically safe	4514747	VOFC-LT-M32C-M-FG12-F19A
	3/2-way closed, single solenoid	G1/2 Flange 1/2 (connection pattern to NAMUR), G1/2	Without	4527268	VOFC-LT-M32C-MC-FG13-F19
			Intrinsically safe	4527269	VOFC-LT-M32C-MC-FG13-F19A


Data sheet – 3/2-way valve, poppet valve, single solenoid, G1/2 in-line

Function

3/2-way valve



–  – Temperature range
–25 ... 60°C

–  – Flow rate
2686 l/min



General technical data

Valve function		3/2-way closed, single solenoid
Pneumatic connection	1	G1/2
	2	G1/2
	3	G1/2
Design		Piloted poppet valve
Width	[mm]	51
Mounting position		Any
Sealing principle		Hard
Manual override		None
Reset method		Mechanical spring
Actuation type		Electric
Type of control		Piloted
Pilot air supply		Internal, external
Flow rate Kv for pressurisation	[m³/h]	2.4
Flow rate Kv for exhausting	[m³/h]	3.3
Flow direction		Non-reversible
Product weight	[g]	880
Switching time off	[ms]	14
Switching time on	[ms]	25
Nominal width	[mm]	12
Standard nominal flow rate 1 → 2	[l/min]	2686
Standard nominal flow rate 2 → 3	[l/min]	3462

Operating and environmental conditions

Operating medium		Compressed air to ISO 8573-1:2010 [7:--:-]
Degree of protection		IP65
Operating pressure range	[bar]	2 ... 8
Operating pressure range in case of external pilot air	[bar]	0 ... 8
Temperature of medium	[°C]	–25 ... 60
Ambient temperature	[°C]	–25 ... 60
Safety integrity level	[SIL]	Up to SIL3 low demand mode
		Up to SIL3 high demand mode
Corrosion resistance class CRC ¹⁾		4

1) Corrosion resistance class CRC 4 to Festo standard FN 940070

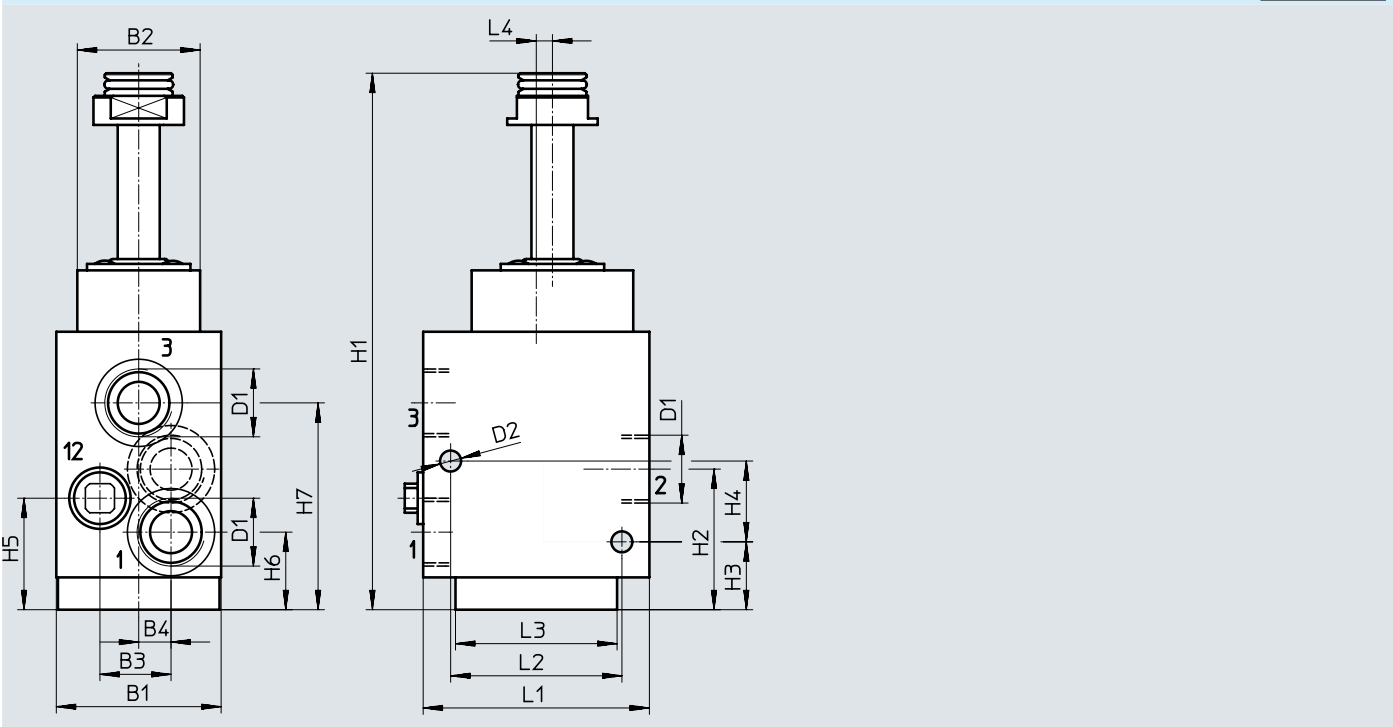
Particularly high corrosion stress. Outdoor exposure under extreme corrosive conditions. Parts exposed to aggressive media, e.g. in the chemical or food industries. Such applications may need to be safeguarded by special tests (→ also FN 940082), using appropriate media.

Materials

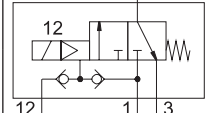
Housing	Ematal-coated aluminium
Seals	NBR
Note on materials	Contains paint-wetting impairment substances, RoHS-compliant

Data sheet – 3/2-way valve, poppet valve, single solenoid, G1/2 in-line

Dimensions Download CAD data → www.festo.com



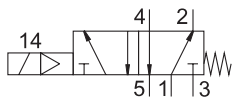
Type	B1	B2	B3	B4	D1	D2	H1	H2	H3	H4	H5	L1	L2	L3	L4
VOFC-LT-M32C-MC-G12-F19	51	37	22	10	G1/2	6.5	166	43.5	21	25	34.5	70	53	50	5
VOFC-LT-M32C-MC-G12-F19A															

Ordering data					
Circuit symbol	Function	Pneumatic connection	Type of ignition protection	Part no.	Type
In-line valve					
	3/2-way closed, single solenoid	G1/2	Without	4514748	VOFC-LT-M32C-MC-G12-F19
			Intrinsically safe	4514749	VOFC-LT-M32C-MC-G12-F19A


Data sheet – 5/2-way valve, piston spool, single solenoid, G1/4 NAMUR

Function

5/2-way valve



–  – Temperature range
–25 ... 60°C

–  – Flow rate
1030 l/min



General technical data

Valve function	5/2-way, single solenoid	
Pneumatic connection	1	G1/4
	2	G1/4 and connection pattern to NAMUR
	3	G1/4
	4	G1/4 and connection pattern to NAMUR
	5	G1/4
Design	Piston spool valve	
Mounting position	Any	
Width	[mm]	40
Sealing principle	Soft	
Manual override	None	
Reset method	Mechanical spring	
Actuation type	Electric	
Type of control	Piloted	
Pilot air supply	Internal	
Flow rate Kv for pressurisation	[m³/h]	1.08
Flow rate Kv for exhausting	[m³/h]	1.08
Flow direction	Non-reversible	
Product weight	[g]	520
Switching time off	[ms]	22
Switching time on	[ms]	26
Nominal width	[mm]	6
Standard nominal flow rate 1→2	[l/min]	1030
Standard nominal flow rate 2→3	[l/min]	978

Operating and environmental conditions

Operating medium	Compressed air to ISO 8573-1:2010 [7:4:4]	
Degree of protection	IP65	
Operating pressure range	[bar]	2.5 ... 8
Temperature of medium	[°C]	–25 ... 60
Ambient temperature	[°C]	–25 ... 60
Safety integrity level	[SIL]	Up to SIL2 low demand mode
		Up to SIL2 high demand mode
Corrosion resistance class CRC ¹⁾	4	

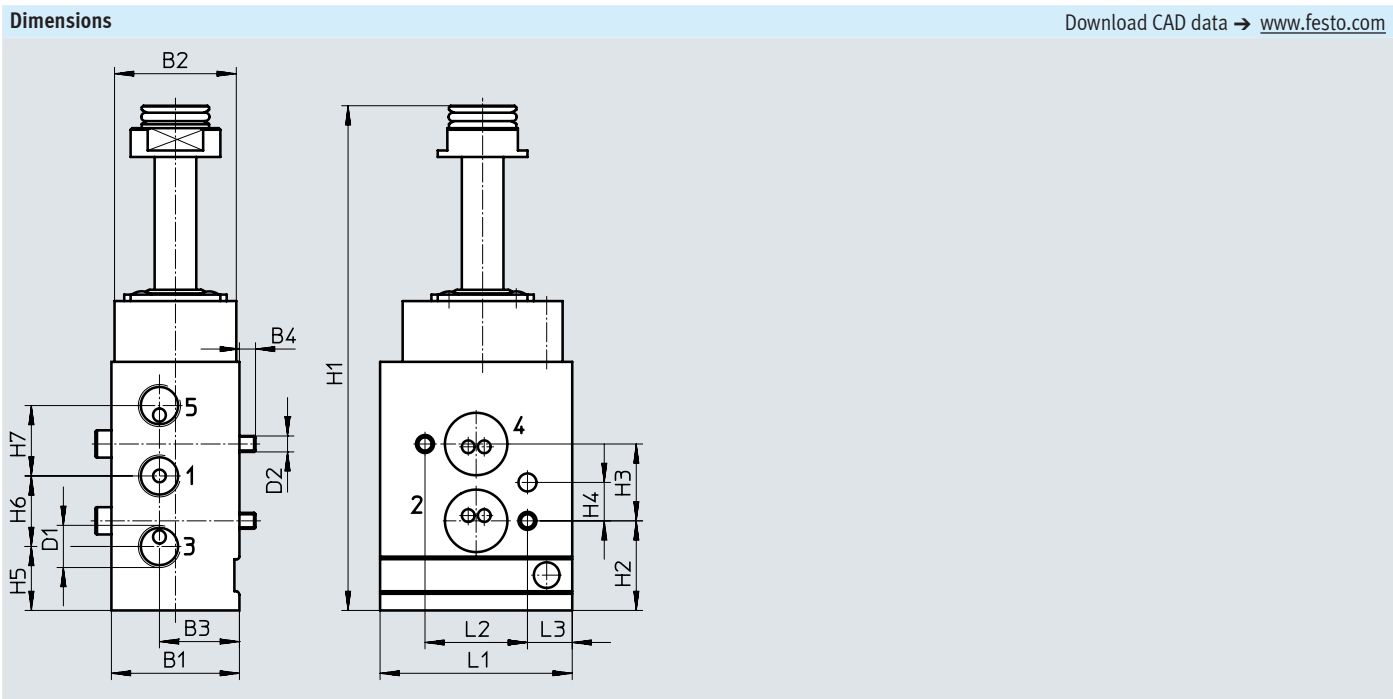
1) Corrosion resistance class CRC 4 to Festo standard FN 940070

Particularly high corrosion stress. Outdoor exposure under extreme corrosive conditions. Parts exposed to aggressive media, e.g. in the chemical or food industries. Such applications may need to be safeguarded by special tests (→ also FN 940082), using appropriate media.

Materials

Housing	Ematal-coated aluminium
Seals	NBR
Note on materials	Contains paint-wetting impairment substances, RoHS-compliant

Data sheet – 5/2-way valve, piston spool, single solenoid, G1/4 NAMUR



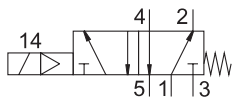
Type	B1	B2	B3	B4	D1	D2	H1	H2	H3	H4	H5	H6	H7	L1	L2	L3
VOFC-L-M52-M-FG14-F19	40	38	25	5	G1/4	M5	158	28	24	12	20	22	22	60	32	14
VOFC-L-M52-M-FG14-F19A																

Ordering data					
Circuit symbol	Function	Pneumatic connection	Type of ignition protection	Part no.	Type
	5/2-way, single solenoid	G1/4 and NAMUR	Without	4514923	VOFC-L-M52-M-FG14-F19
			Intrinsically safe	4514924	VOFC-L-M52-M-FG14-F19A


Data sheet – 5/2-way valve, piston spool, single solenoid, G1/4 in-line

Function

5/2-way valve



–  – Temperature range
–25 ... 60°C

–  – Flow rate
1030 l/min



General technical data

Valve function	5/2-way, single solenoid	
Pneumatic connection	1	G1/4
	2	G1/4
	3	G1/4
	4	G1/4
	5	G1/4
Design	Piston spool valve	
Mounting position	Any	
Width	[mm]	40
Sealing principle	Soft	
Manual override	None	
Reset method	Mechanical spring	
Actuation type	Electric	
Type of control	Piloted	
Pilot air supply	Internal	
Flow rate Kv for pressurisation	[m³/h]	1.08
Flow rate Kv for exhausting	[m³/h]	1.08
Flow direction	Non-reversible	
Product weight	[g]	520
Switching time off	[ms]	22
Switching time on	[ms]	26
Nominal width	[mm]	6
Standard nominal flow rate 1→2	[l/min]	1030
Standard nominal flow rate 2→3	[l/min]	978

Operating and environmental conditions

Operating medium	Compressed air to ISO 8573-1:2010 [7:4:4]	
Degree of protection	IP65	
Operating pressure range	[bar]	2.5 ... 8
Temperature of medium	[°C]	–25 ... 60
Ambient temperature	[°C]	–25 ... 60
Safety integrity level	[SIL]	Up to SIL2 low demand mode
		Up to SIL2 high demand mode
Corrosion resistance class CRC ¹⁾	4	

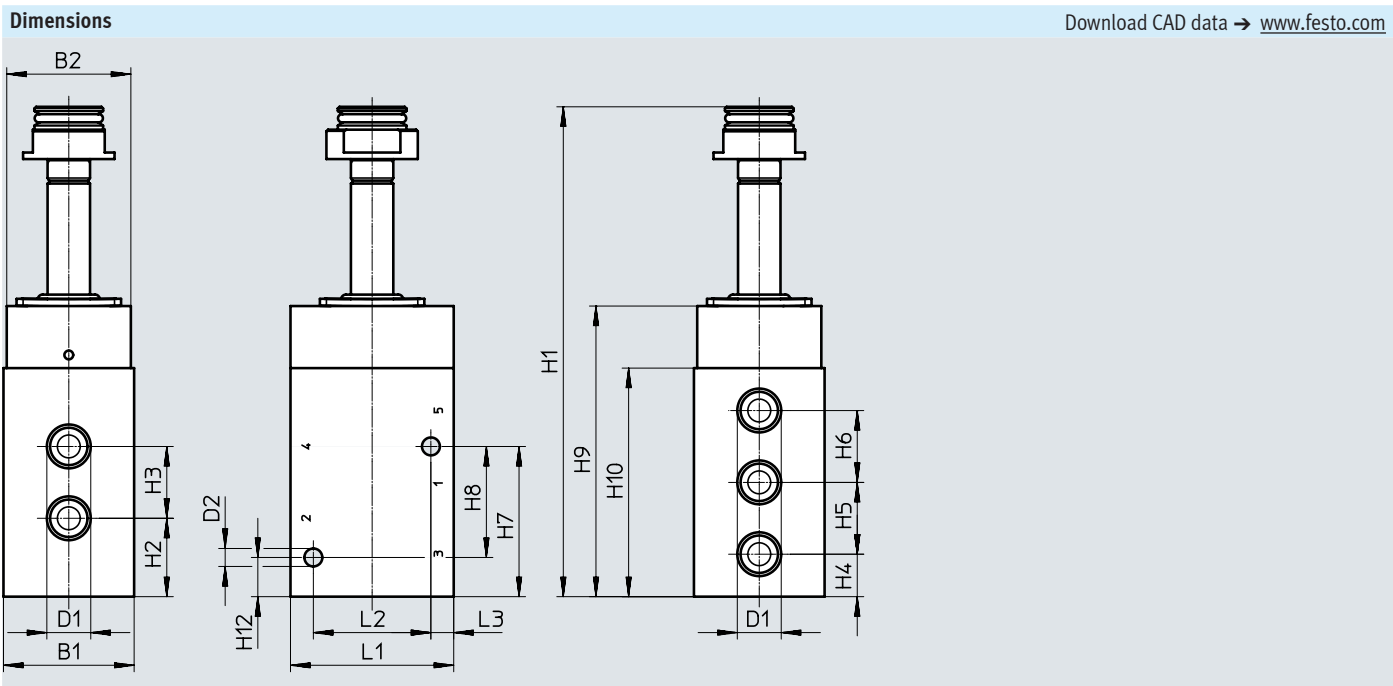
1) Corrosion resistance class CRC 4 to Festo standard FN 940070

Particularly high corrosion stress. Outdoor exposure under extreme corrosive conditions. Parts exposed to aggressive media, e.g. in the chemical or food industries. Such applications may need to be safeguarded by special tests (→ also FN 940082), using appropriate media.

Materials

Housing	Ematal-coated aluminium
Seals	NBR
Note on materials	Contains paint-wetting impairment substances, RoHS-compliant

Data sheet – 5/2-way valve, piston spool, single solenoid, G1/4 in-line



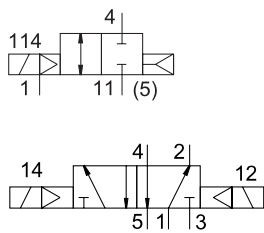
Type	B1	B2	D1	D2	H1	H2	H3	H4	H5	H6	H7	H8	H9	H10	H13	L1	L2	L3
VOFC-L-M52-M-G14-F19	40	38	G1/4	5.5	150	24	22	13	22	22	46	34	89	70	12	50	36	7
VOFC-L-M52-M-G14-F19A																		

Ordering data					
Circuit symbol	Function	Pneumatic connection	Type of ignition protection	Part no.	Type
In-line valve					
	5/2-way, single solenoid	G1/4	Without	4514925	VOFC-L-M52-M-G14-F19
			Intrinsically safe	4514926	VOFC-L-M52-M-G14-F19A

Data sheet – 5/2-way valves, piston spool, double solenoid, G1/4, NAMUR

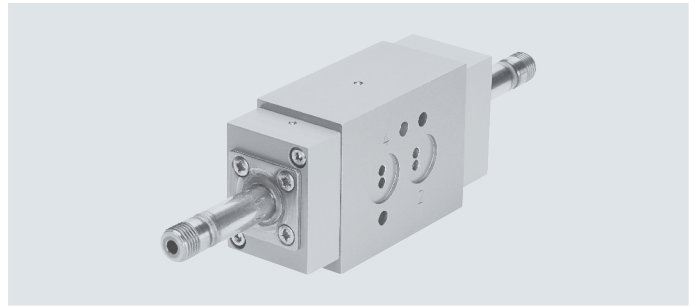
Function

5/2-way valve



Temperature range
–25 ... 60°C

Flow rate
989 l/min



General technical data		G1/4, NAMUR	G1/4
Valve function		5/2-way, double solenoid	
Pneumatic connection	1	G1/4	G1/4
	2	Flange 1/4 and connection pattern to NAMUR	G1/4
	3	G1/4	G1/4
	4	Flange 1/4 and connection pattern to NAMUR	G1/4
	5	G1/4	G1/4
Design		Piston spool valve	
Mounting position		Any	
Width	[mm]	40	
Sealing principle		Soft	
Manual override		None	
Actuation type		Electric	
Type of control		Piloted	
Pilot air supply		Internal	
Flow rate Kv for pressurisation	[m³/h]	1.08	
Flow rate Kv for exhausting	[m³/h]	1.08	
Flow direction		Non-reversible	
Product weight	[g]	680	790
Switching time off	[ms]	22	
Switching time on	[ms]	26	
Max. switching frequency	[Hz]	1	
Nominal width	[mm]	6	
Standard nominal flow rate 1→2	[l/min]	989	
Standard nominal flow rate 2→3	[l/min]	978	

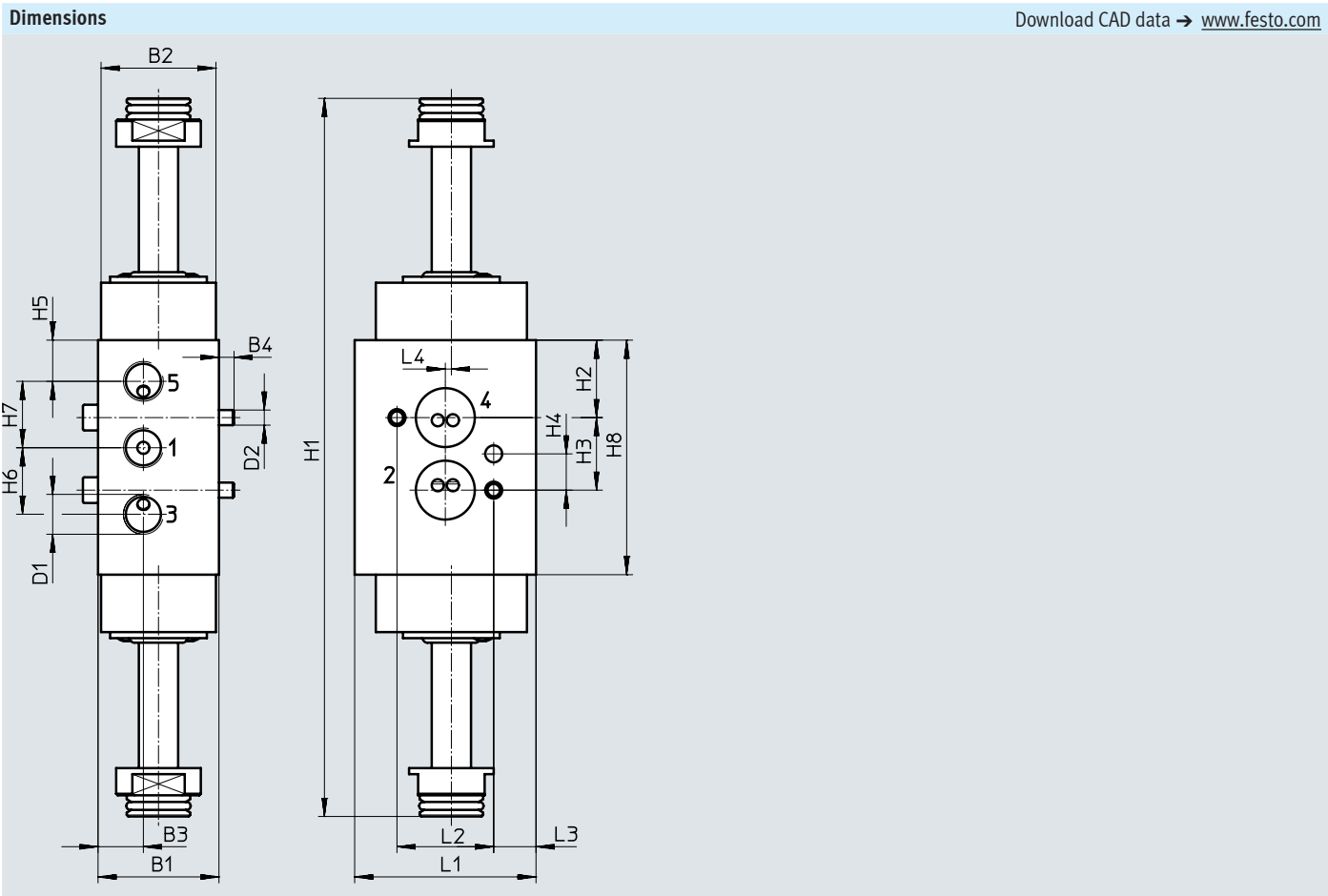
Operating and environmental conditions	
Operating medium	Compressed air to ISO 8573-1:2010 [7:4:4]
Degree of protection	IP65
Operating pressure range	[bar] 2.5 ... 8
Temperature of medium	[°C] –25 ... 60
Ambient temperature	[°C] –25 ... 60
Safety integrity level	Up to SIL 2 low demand mode
	Up to SIL 2 high demand mode
Corrosion resistance class CRC ¹⁾	4

1) Corrosion resistance class CRC 4 to Festo standard FN 940070

Particularly high corrosion stress. Outdoor exposure under extreme corrosive conditions. Parts exposed to aggressive media, e.g. in the chemical or food industries. Such applications may need to be safeguarded by special tests (→ also FN 940082), using appropriate media.

Materials	
Housing	Ematal-coated aluminium
Seals	NBR
Note on materials	Contains paint-wetting impairment substances, RoHS-compliant

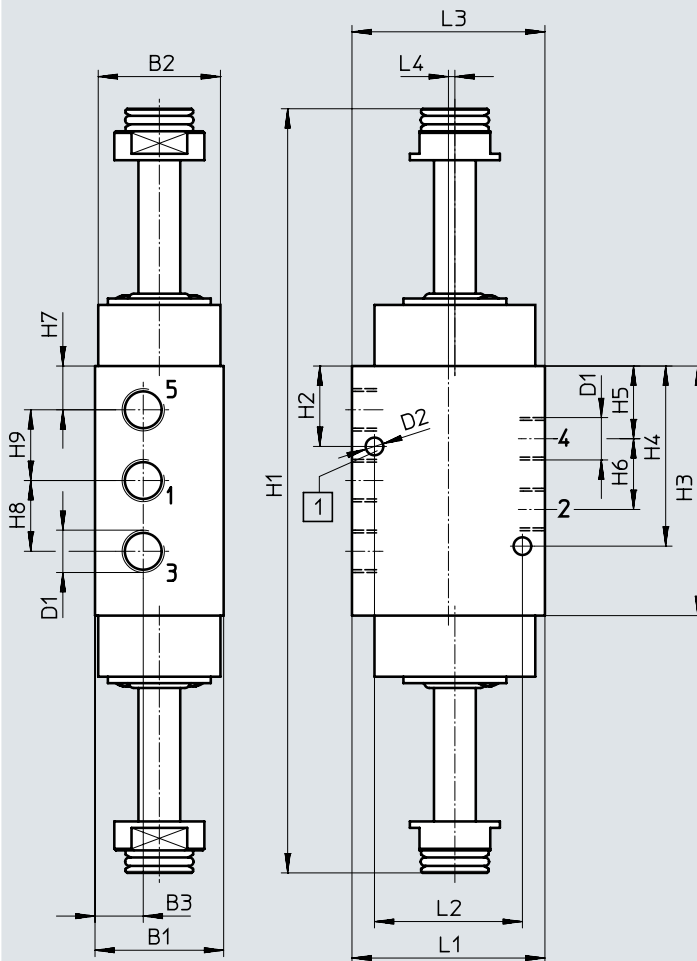
Data sheet – 5/2-way valves, piston spool, double solenoid, G1/4, NAMUR



Type	B1	B2	B3	B4	D1	D2	H1	H2	H3	H4	H5	H6	H7	H8	L1	L2	L3	L4
VOFC-L-B52-FG14-F19	40	38	15	5	G1/4	M5	237.6	25.6	24	12	13.6	22	22	77.6	60	32	14	2
VOFC-L-B52-FG14-F19A																		

Data sheet – 5/2-way valves, piston spool, double solenoid, G1/4, NAMUR

Dimensions

Download CAD data → www.festo.com

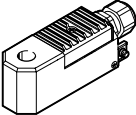
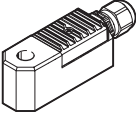
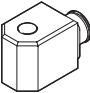
[1] Coding pin M5x10

Type	B1	B2	B3	D1	D2	H1	H2	H3	H4	H5	H6	H7	H8	H9	L1	L2	L3	L4
VOFC-L-B52-G14-F19	40	38	15	G1/4	5.5	240	25	77.6	56	22.6	22	13.6	22	22	60	46	60	2
VOFC-L-B52-G14-F19A																		

Ordering data

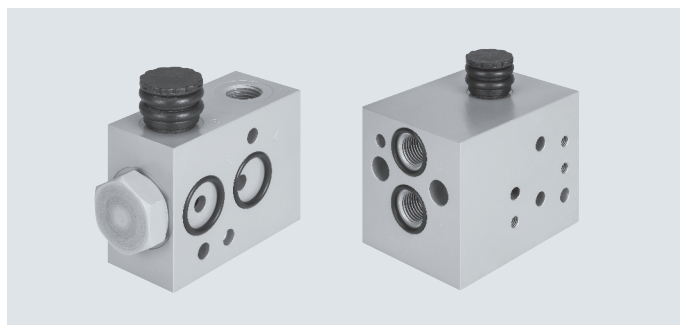
Circuit symbol	Function	Pneumatic connection	Type of ignition protection	Part no.	Type
In-line valve					
	5/2-way, double solenoid	G1/4 and NAMUR	Without	4514929	VOFC-L-B52-FG14-F19
			Intrinsically safe	4514930	VOFC-L-B52-FG14-F19A
	5/2-way, double solenoid	G1/4	Without	4514927	VOFC-L-B52-G14-F19
			Intrinsically safe	4514928	VOFC-L-B52-G14-F19A

Accessories – Solenoid coils S13

Ordering data	Description		Part no.	Type
	EX4-ME coil, terminal box, cable entry thread metric, M20x1.5	24 V AC/DC	8109396	VACC-S13-18-K4-1U-EX4ME
		24 V AC/DC	8109399	VACC-S13-18-K4-1UF-EX4ME
		60 V AC/DC	8109400	VACC-S13-18-K4-27U-EX4ME
		110 V AC/DC	8109397	VACC-S13-18-K4-2U-EX4ME
		230 V AC/DC	8109398	VACC-S13-18-K4-3U-EX4ME
	EX4A coil, terminal box, cable entry thread metric, M20x1.5	14 ... 32 V DC	8109401	VACC-S13-11-K4-1-EX4A
	A1 coil, plug to EN 175301-803, type A	24 V DC	562889	VACC-S13-18-A1-1
		24 V AC/DC	562890	VACC-S13-18-A1-1U
		110 V AC/DC	562891	VACC-S13-18-A1-2U
		230 V AC/DC	562892	VACC-S13-18-A1-3U

Accessories – Sub-base VABS-S7-RB/BE...

Connection pattern: NAMUR



General technical data			
Type		Pressurisation and exhaust block VABS-S7-BE-...	Redundancy block VABS-S7-RB-...
Type of mounting		Via through-hole	
Mounting position		Any	
Flow rate Kv for pressurisation	[m³/h]	2.2	–
Flow rate Kv for exhausting	[m³/h]	8.6	–
Product weight	[g]	250	–
Pneumatic connection	1	G1/4, 1/4 NPT	G1/4, 1/4 NPT
	2	Flange 1/4, connection pattern to NAMUR	Flange 1/4, connection pattern to NAMUR
	3	G1/4, 1/4 NPT	G1/4, 1/4 NPT
	12	–	G1/4, 1/4 NPT

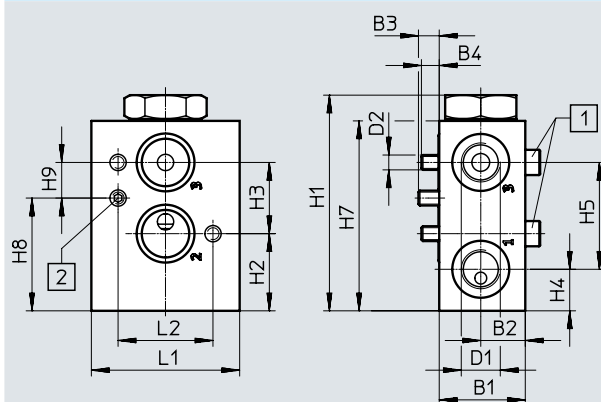
Operating and environmental conditions		VABS-S7-BE	VABS-S7-RB
Operating medium		Compressed air to ISO 8573-1:2010 [–:–:–]	
Operating pressure	[bar]	2 ... 8	0 ... 10
Pilot air supply		Internal	External/internal
Degree of protection		IP65 (in the installed state)	
Corrosion resistance class CRC ¹⁾		4	

1) Corrosion resistance class CRC 4 to Festo standard FN 940070

Particularly high corrosion stress. Outdoor exposure under extreme corrosive conditions. Parts exposed to aggressive media, e.g. in the chemical or food industries. Such applications may need to be safeguarded by special tests (→ also FN 940082), using appropriate media.

Materials	
Sub-base	Ematal-coated aluminium
Seals	NBR
Note on materials	Contains paint-wetting impairment substances, RoHS-compliant

Dimensions

Download CAD data → www.festo.com

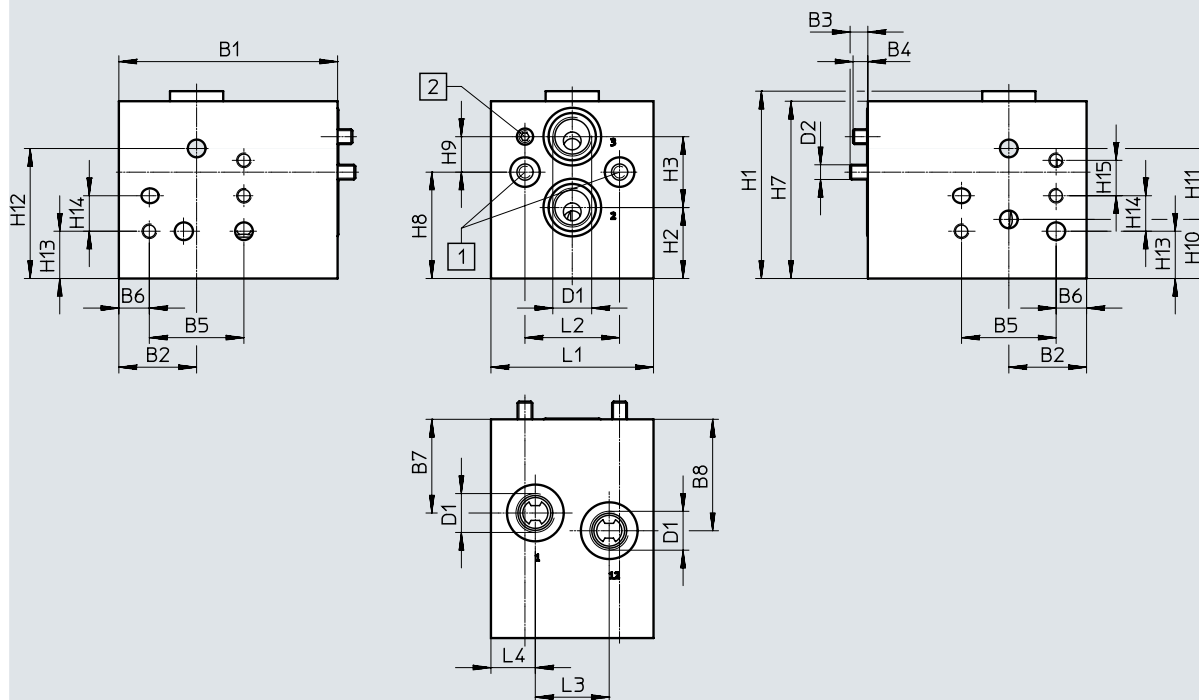
[1] Socket head screw M5x35

[2] Threaded pin M5x10

Type	B1	B2	B3	B4	D1	D2	H1	H2	H3	H4	H5	H7	H8	H9	L1	L2
VABS-S7-BE-B-G14-V14-A	29	15	7	6	G1/4	M5	72.7	26	24	14	36	64	38	12	50	32
VABS-S7-BE-B-N14-V14-A					1/4 NPT											

Accessories – Sub-base VABS-S7-RB/BE-...

Dimensions

Download CAD data → www.festo.com

[1] Socket head screw M5x70

[2] Threaded pin M5x10

Type	B1	B2	B3	B4	B5	B6	B7	B8	D1	D2	L1	L2	L3	L4
VABS-S7-RB-B-G14-V14-A	74	26.3	6	5	32	10.3	31.7	37.7	G1/4	M5	55	32	25	15
VABS-S7-RB-B-N14-V14-A									1/4 NPT					

Type	H1	H2	H3	H7	H8	H9	H10	H11	H12	H13	H14	H15
VABS-S7-RB-B-G14-V14-A	63.4	24	24	60	36	12	20	24	44	16	12	12
VABS-S7-RB-B-N14-V14-A												

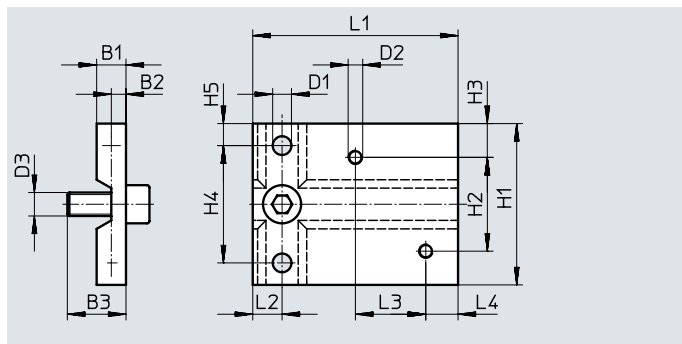
Ordering data

	Description	Part no.	Type
	Sub-base for mounting two solenoid valves with G-thread connection for redundant circuitry, with flange 1/4, connection pattern to NAMUR Using the additional auxiliary power terminal, the intermediate plate can also be used with pilot-controlled solenoid valves on actuators that have a positioner for fail-safe functions.	3580505	VABS-S7-RB-B-G14-V14-A
	Sub-base for mounting two solenoid valves with NPT-thread connection for redundant circuitry, with flange 1/4, connection pattern to NAMUR Using the additional auxiliary power terminal, the intermediate plate can also be used with pilot-controlled solenoid valves on actuators that have a positioner for fail-safe functions.	4727331	VABS-S7-RB-B-N14-V14-A
	Sub-base as a pressurisation and exhaust block with G-thread connection, with flange 1/4, connection pattern to NAMUR	2999476	VABS-S7-BE-B-G14-V14-A
	Sub-base as a pressurisation and exhaust block with NPT-thread connection, with flange 1/4, connection pattern to NAMUR	4727328	VABS-S7-BE-B-N14-V14-A

Accessories

Mounting plate VAME-S7-P

Mounting plate material:
Ematal-coated aluminium
Contains paint-wetting impairment
substances, RoHS-compliant
Mounting: via through-hole



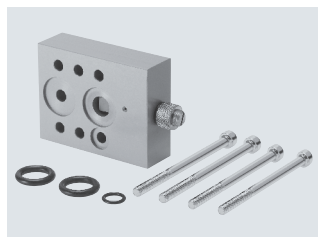
Dimensions [mm] and ordering data																	
B1	B2	B3	D1	D2	D3	H1	H2	H3	H4	H5	L1	L2	L3	L4	CRC ¹⁾	Part no.	Type
10	5	20	6.4	M5	M8	55	32	11.5	40	7.5	70	10	24	11	4	563399	VAME-S7-P

1) Corrosion resistance class CRC 4 to Festo standard FN 940070

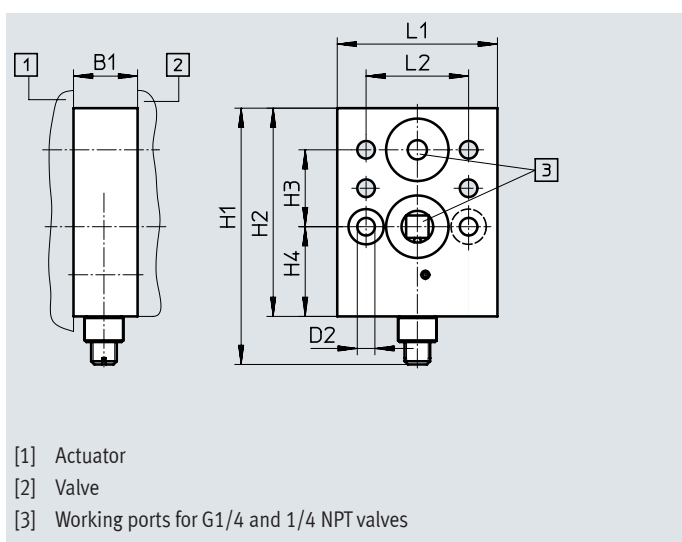
Particularly high corrosion stress. Outdoor exposure under extreme corrosive conditions. Parts exposed to aggressive media, e.g. in the chemical or food industries. Such applications may need to be safeguarded by special tests
(→ also FN 940082), using appropriate media.

Throttle plate for single-acting actuators

Throttle plate material: Ematal-coated aluminium
Seals material: NBR
Contains paint-wetting impairment substances, RoHS-compliant
Operating medium: Compressed air to ISO 8573-1:2010 [7:-:-]
Operating pressure: 0 ... 12 bar
Pilot air supply: internal/external
Mounting position: any
Mounting: via through-hole
Degree of protection: IP65 (when installed)



Function:
Flow control for supply air and/or exhaust air for an actuator with NAMUR interface for valves VOFC/VOFD



- [1] Actuator
- [2] Valve
- [3] Working ports for G1/4 and 1/4 NPT valves

Dimensions [mm] and ordering data										
B1	D2	H1	H2	H3	H4	L1	L2	CRC ¹⁾	Part no.	Type
20	5.5	80	65	24	28	50	32	4	563401	VABF-S7-F1B5P1-F

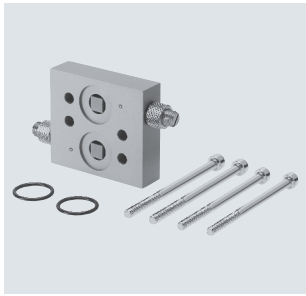
1) Corrosion resistance class CRC 4 to Festo standard FN 940070

Particularly high corrosion stress. Outdoor exposure under extreme corrosive conditions. Parts exposed to aggressive media, e.g. in the chemical or food industries. Such applications may need to be safeguarded by special tests
(→ also FN 940082), using appropriate media.

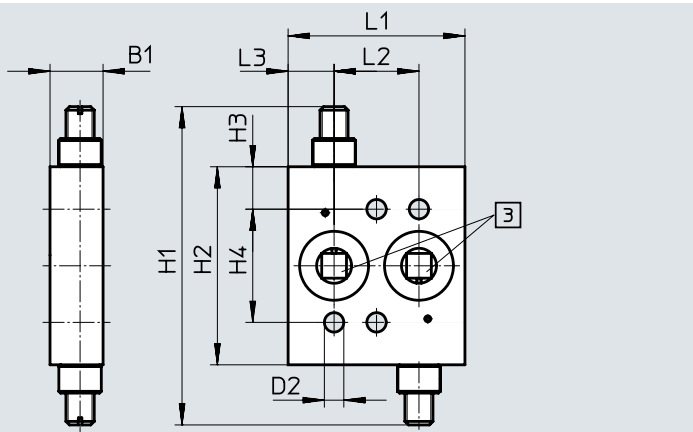
Accessories

Throttle plate for double-acting actuators

Throttle plate material: Ematal-coated aluminium
Seals material: NBR
Contains paint-wetting impairment substances, RoHS-compliant
Operating medium: Compressed air to ISO 8573-1:2010 [7:--:-]
Operating pressure: 0 ... 12 bar
Pilot air supply: internal/external
Mounting position: any
Mounting: via through-hole
Degree of protection: IP65 (when installed)



Function:
2-duct exhaust air flow control for an actuator with NAMUR interface



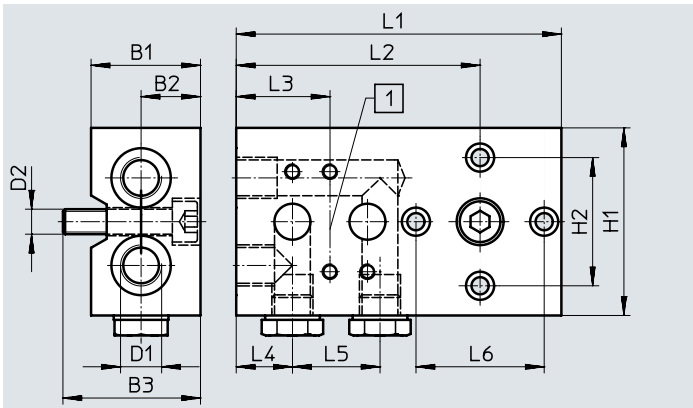
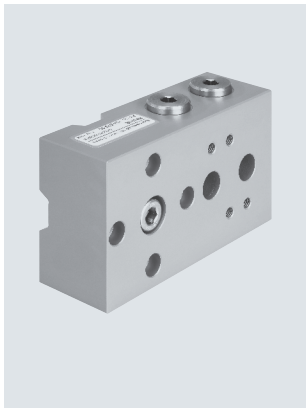
[1] Working ports for G1/4 and 1/4 NPT valves

Dimensions [mm] and ordering data											Part no.	Type
B1	D2	H1	H2	H3	H4	L1	L2	L3	CRC ¹⁾			
15	5.5	90	56	12	32	50	24	13	4		563395	VABF-S7-F1B1P2-F

1) Corrosion resistance class CRC 4 to Festo standard FN 940070
Particularly high corrosion stress. Outdoor exposure under extreme corrosive conditions. Parts exposed to aggressive media, e.g. in the chemical or food industries. Such applications may need to be safeguarded by special tests
(→ also FN 940082), using appropriate media.

Sub-base

Sub-base material: Ematal-coated aluminium
Seals material: NBR
Contains paint-wetting impairment substances, RoHS-compliant
Operating medium: Compressed air to ISO 8573-1:2010 [7:--:-]
Operating pressure: 0 ... 10 bar
Mounting position: any
Mounting: via through-hole
Degree of protection: IP65 (when installed)



[1] NAMUR flange

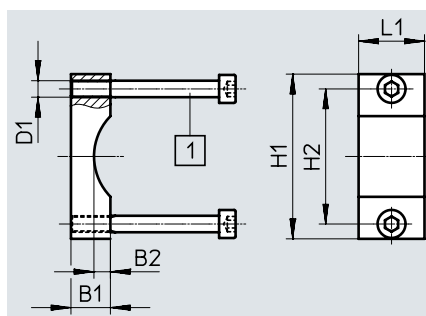
Dimensions [mm] and ordering data														Part no.	Type
B1	B2	B3	D1	D2	H1	H2	L1	L2	L3	L4	L5	L6	CRC ¹⁾		
35	19	44	G1/4	M8	60	41	104	78	30	18	28	41	4	563396	VABS-S7-S-G14

1) Corrosion resistance class CRC 4 to Festo standard FN 940070
Particularly high corrosion stress. Outdoor exposure under extreme corrosive conditions. Parts exposed to aggressive media, e.g. in the chemical or food industries. Such applications may need to be safeguarded by special tests
(→ also FN 940082), using appropriate media.

Accessories

Mounting bracket

Mounting bracket material:
Ematal-coated aluminium
Contains paint-wetting impairment
substances, RoHS-compliant



[1] Socket head screw, 2x M5x45 and 2x M5x65

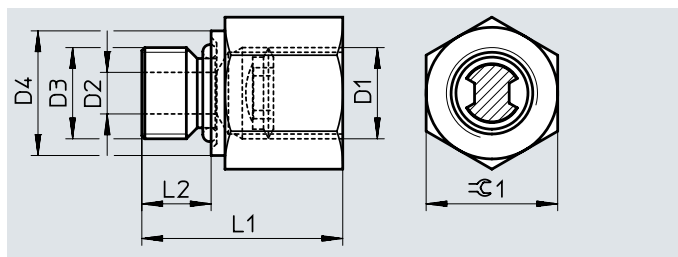
Dimensions [mm] and ordering data								Part no.	Type
B1	B2	D1	H1	H2	L1	CRC ¹⁾			
12	5	M5	50	41	20	4		563403	VAME-S7-Y

1) Corrosion resistance class CRC 4 to Festo standard FN 940070

Particularly high corrosion stress. Outdoor exposure under extreme corrosive conditions. Parts exposed to aggressive media, e.g. in the chemical or food industries. Such applications may need to be safeguarded by special tests (→ also FN 940082), using appropriate media.

Adapter with filter

Adapter material: high-alloy stainless steel
Seals material: NBR
Note on materials:
Contains paint-wetting impairment
substances, RoHS-compliant
Operating pressure 2 ... 8 bar



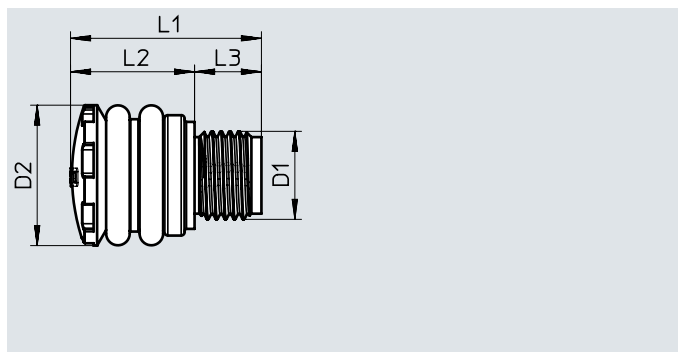
Dimensions [mm] and ordering data								Part no.	Type
D1	D2	D3	D4	L1	L2	G1	CRC ¹⁾		
1/4 NPT	6	G1/4	18	29	10	19	1	563397	NPFV-AF-G14-N14-MF
G1/4	6	G1/4	18	29	10	19	1	563398	NPFV-AF-G14-G14-MF
1/4 NPT	6	1/4 NPT	18	29	10	19	1	4727333	NPFV-AF-N14-N14-MF

1) Corrosion resistance class CRC 1 to Festo standard FN 940070

Low corrosion stress. Dry internal application or transport and storage protection. Also applies to parts behind coverings, in the non-visible interior area, and parts which are covered in the application (e.g. drive trunnions).

Exhaust protection G1/4

Housing material: PA
Seals material: EPDM
Contains paint-wetting impairment
substances, RoHS-compliant
Operating medium: Compressed air to
ISO 8573-1:2010 [7:-:-]
Operating pressure: 0 ... 10 bar
Ambient temperature: -50 ... 60°C
Type of mounting: screw-in, with male
thread



Dimensions [mm] and ordering data						Part no.	Type
D1	D2	L1	L2	L3			
G1/4, 1/4 NPT	21	28.5	18.5	10		563400	VABD-D3-SN-G14

Accessories

Exhaust protection 1/2 NPT

Housing material: PA

Seals material: EPDM

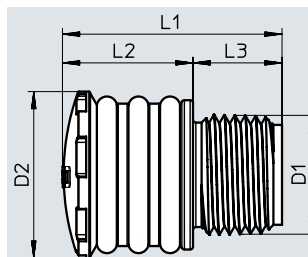
Contains paint-wetting impairment substances, RoHS-compliant

Operating medium: Compressed air to ISO 8573-1:2010 [7:-:-]

Operating pressure: 0 ... 12 bar

Ambient temperature: -50 ... 60°C

Type of mounting: screw-in, with male thread



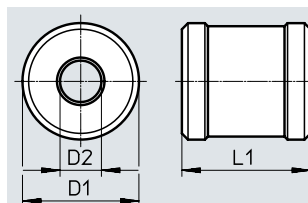
Dimensions [mm] and ordering data						
D1	D2	L1	L2	L3	Part no.	Type
G1/2, 1/2 NPT	29	38	23	15	3535104	VABD-D3-SN-N12

Manual override

Material: anodised aluminium, contains paint-wetting impairment substances, RoHS-compliant

Function:

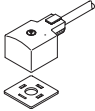

Manual override of basic valves instead of a solenoid coil



Dimensions [mm] and ordering data						
D1	D2	L1	Weight [g]	CRC ¹⁾	Part no.	Type
38	13.5	42	120	2	3580654	VAOH-MB-S7-S13

1) Corrosion resistance class CRC 2 to Festo standard FN 940070

Moderate corrosion stress. Indoor applications in which condensation can occur. External visible parts with primarily decorative surface requirements which are in direct contact with a normal industrial environment.

Ordering data				
	Description		Part no.	Type
Connecting cable			Data sheets → Internet: kmc	
	Operating voltage 24 V DC, switching status indication with LED	Cable length 2.5 m	30931	KMC-1-24 DC-2.5-LED
		Cable length 5 m	30933	KMC-1-24 DC-5-LED
		Cable length 10 m	193459	KMC-1-24-10-LED
	Operating voltage up to 240 V AC	Cable length 2.5 m	30932	KMC-1-230 AC-2.5
		Cable length 5 m	30934	KMC-1-230 AC-5
Plug socket			Data sheets → Internet: mssd	
	Cable connection using locking screws		34583	MSSD-C

Festo - Your Partner in Automation



1 Festo Inc.
5300 Explorer Drive
Mississauga, ON L4W 5G4
Canada

Festo Customer Interaction Center
Tel: 1 877 463 3786
Fax: 1 877 393 3786
Email: customer.service.ca@festo.com



2 Festo Pneumatic
Av. Ceylán 3,
Col. Tequesquináhuac
54020 Tlalnepantla,
Estado de México

Multinational Contact Center
01 800 337 8669
ventas.mexico@festo.com



3 Festo Corporation
1377 Motor Parkway
Suite 310
Islandia, NY 11749

Festo Customer Interaction Center
1 800 993 3786
1 800 963 3786
customer.service.us@festo.com



4 Regional Service Center
7777 Columbia Road
Mason, OH 45040

Connect with us

www.festo.com/socialmedia



www.festo.com

Subject to change